

CRISTALLI DI LUNA



Cristalli di Luna 49 • 50 ml T00



Cristalli di Luna 42 • 100 ml T30 + 100 ml T28

Tutte le tinte della cartella sono state realizzate miscelando flaconi dei nostri coloranti universali Totocolor e Stabilcolor con confezioni di 2,5 litri di Cristalli di Luna.

Tutte le tinte sono da considerarsi puramente indicative.

All the colors in this folder are made by mixing our universal colorants Totocolor and Stabilcolor to Cristalli di Luna 2,5 liter-packages.

All the tints are to be considered as approximate.



19 • 15 ml T34



20 • 30 ml T34



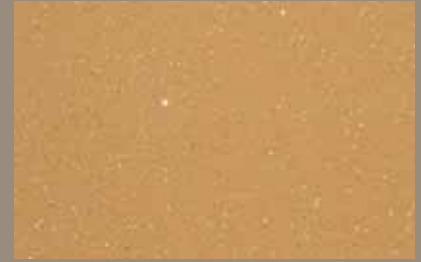
21 • 100 ml T34



28 • 50 ml T34



29 • 50 ml S1



30 • 100 ml S1



31 • 15 ml T21



32 • 30 ml T21



33 • 50 ml T21



46 • 50 ml S1 + 50 ml T28



47 • 100 ml S1 + 100 ml T28



48 • 100 ml S2



43 • 100 ml T27



44 • 200 ml T25 + 50 ml T28



45 • 200 ml T25 + 100 ml T28



25 • 30 ml T25 + 50 ml T28



26 • 50 ml T25 + 100 ml T28



27 • 100 ml T25 + 200 ml T28



34 • 15 ml T25



35 • 50 ml T25



36 • 100 ml T25



22 • 100 ml T26



23 • 50 ml T25 + 15 ml T31



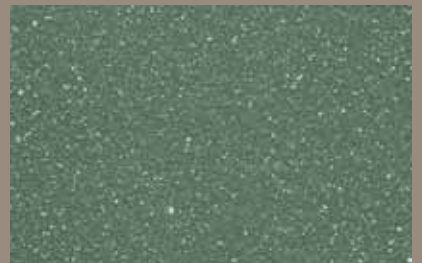
24 • 100 ml T25 + 30 ml T31



55 • 15 ml T31



57 • 100 ml S6



58 • 100 ml T31 + 30 ml T30 + 15 ml T24



16 • 30 ml T31



17 • 15 ml T30 + 50 ml T31



18 • 30 ml T30 + 100 ml T31



56 • 15 ml T32



10 • 30 ml T32



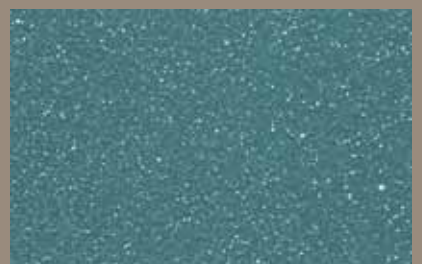
11 • 200 ml T32 + 15 ml T30



4 • 50 ml S5



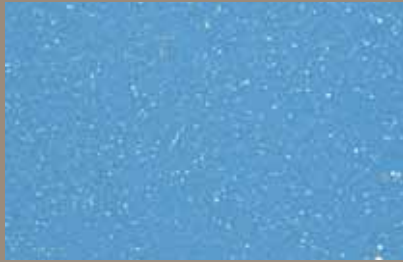
5 • 100 ml S5



6 • 100 ml S5 + 30 ml T30



13 • 15 ml T30



14 • 50 ml T30



15 • 100 ml T30



40 • 15 ml T28 + 15 ml T30



41 • 50 ml T28 + 50 ml T30



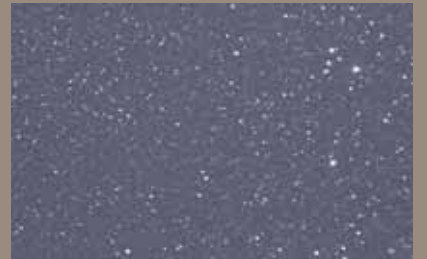
42 • 100 ml T28 + 100 ml T30



37 • 50 ml T28 + 15 ml T30



38 • 100 ml T28 + 30 ml T30



39 • 250 ml T28 + 80 ml T30



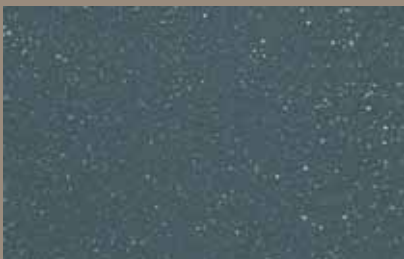
59 • 15 ml T29



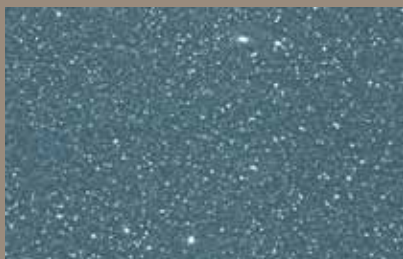
60 • 30 ml T29



61 • 100 ml T29



7 • 15 ml T24 + 50 ml T30



8 • 15 ml T24 + 100 ml T30



9 • 30 ml T24 + 100 ml T30



1 • 15 ml T24



2 • 30 ml T24



3 • 50 ml T24

CRISTALLI DI LUNA + Decorfinish Plus



Cristalli di Luna 50 • 300 ml T28 con Decorfinish Plus (top coated by Decorfinish Plus)

ISTRUZIONI PER L'APPLICAZIONE DI DECORFINISH PLUS

Decorfinish Plus può essere applicato a pennello, a rullo o a spruzzo.
Diluire il prodotto con il 5-10% di acqua.
Applicare una sola mano di prodotto avendo cura di incrociare bene le pennellate su tutta la superficie.

INFORMAZIONI TECNICHE

Rendimento teorico: 10-12 m²/lt.
Diluizione: 5-10% di acqua.
Pulizia mani, attrezzi, utensili: acqua.
Temperatura di stoccaggio: +5°C / + 35°C.

INSTRUCTIONS FOR THE APPLICATION OF DECORFINISH PLUS

Decorfinish Plus can be applied by brush, roller or spray.
Dilute the product with 5-10% water.
Apply a single coat of the product, taking care to crisscross the strokes well over the entire surface.

TECHNICAL INFORMATION

Theoretical coverage: 10-12 sqm/litre.
Thinning: 5-10% water.
Tools cleaning: water.
Storage temperature: +5°C / + 35°C.

CRISTALLI DI LUNA + Decorfinish Plus

Decorfinish Plus è una vernice all'acqua monocomponente superlucida, ideata per proteggere e rendere più lavabili i prodotti decorativi in genere. È un ottimo lucidante quando all'effetto opaco si preferisca una magnifica superficie lucida. Decorfinish Plus è adatto per lucidare tutti i prodotti decorativi Ucie.

Decorfinish Plus is a single-component waterborne super glossy glaze, designed to protect and make more washable the decorative paints in general. It has a very good sheen effect when you prefer a beautiful glossy surface over a mat one. Decorfinish Plus is perfect for sheen all UCIC decorative products

Cristalli di Luna



54 • 30 ml T28 + 30 ml T30

Cristalli di Luna con Decorfinish Plus

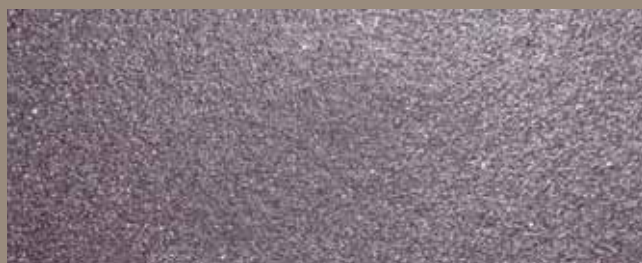
Cristalli di Luna top coated by Decorfinish Plus



54 • 30 ml T28 + 30 ml T30



51 • 200 ml T28 + 30 ml T30



51 • 200 ml T28 + 30 ml T30



52 • 15 ml T28 + 15 ml T24



52 • 15 ml T28 + 15 ml T24



53 • 100 ml T29 + 30 ml T24



53 • 100 ml T29 + 30 ml T24